



For a translated user guide, please scan the QR code or visit the website www.allflex.global/rapidmatic-evo

Allflex New Zealand Ltd
17 El Prado Drive
Palmerston North
06 3567199
www.allflex.co.nz

Allflex Australia Pty Ltd
185 Queensport Road North
Murarrie QLD 4172
1300 138 247
www.allflex.com.au

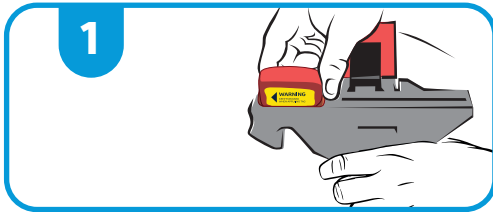


RapIDmatic Evo Applicator

For the application of Allflex
RapID Evo tags only on sheep and goats

Copyright © 2024 Merck & Co., Inc., Rahway, NJ, USA and its affiliates.
All rights reserved. AH1-NON-240600001

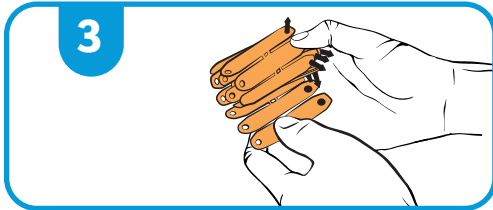




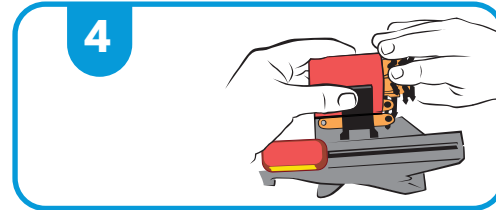
1 Ensure loader/cutter is in the locked position (at front of applicator).



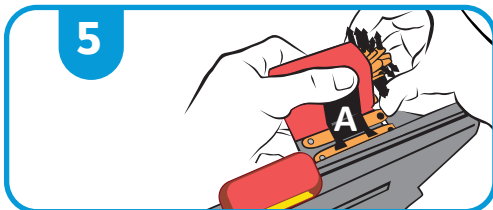
2 Roll RapID Evo Tags towards you firmly. Orientate the pins outwards to avoid jamming.



3 Leave the last two RapID Evo Tags Unrolled.



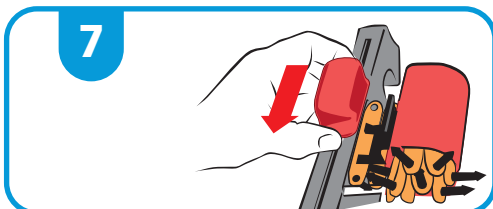
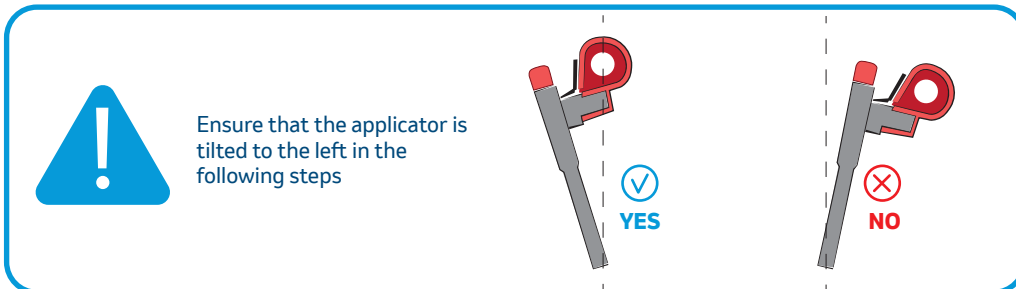
4 Load into drum.



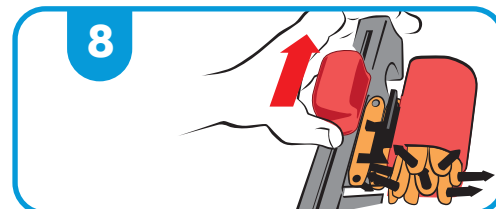
5 Depress the clamp (A) firmly. Slide tags out until location lugs are between first and second tags.



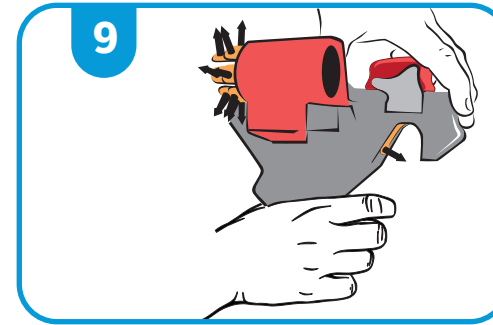
6 Pull trigger to move tag into the Load position.



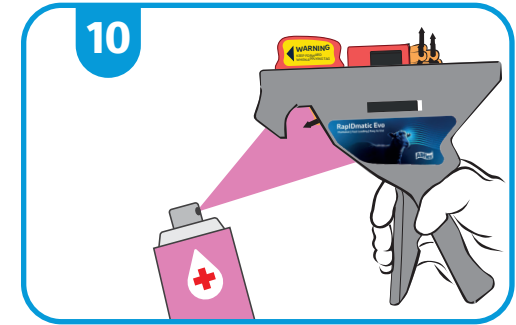
7 Pull topslide back to cut the tag.



8 Push topslide forward to load into applicator jaw.



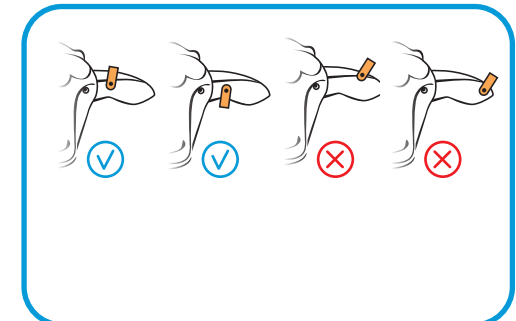
9 Check tag position.



10 Avoid Iodine based disinfectants when sterilising tags. If irritation occurs after applying the identification tag, please consult your veterinarian for appropriate treatment.



11 Select optimum position on ear for tag. Pull trigger to apply.



Tags should be located one quarter (1/4) ear length away from the head, allowing room for growth if required.

